

DIRECTIONS

From the North:

Head south on Interstate 43 towards Mequon. Take exit 85 toward W Mequon Rd./ WI-57/ WI-167. Turn left (east) at W Mequon Rd. W Mequon Rd turns right and becomes N Lake Shore Dr. The park entrance will be on the left (east).

From the South:

Head north on Interstate 43 towards Mequon. Take exit 85 toward W Mequon Rd./ WI-57/ WI-167. Turn right (east) at W Mequon Rd. W Mequon Rd turns right and becomes N Lake Shore Dr. The park entrance will be on the left (east).

From the West:

Head east on W Mequon Rd./WI-57 /WI-167 towards Lake Michigan. W Mequon Rd. turns right and becomes N Lake Shore Dr. The park entrance will be on the left (east).



**OZAUKEE COUNTY
PLANNING & PARKS
DEPARTMENT**
121 W. MAIN STREET
P.O. BOX 994
PORT WASHINGTON, WI
53074

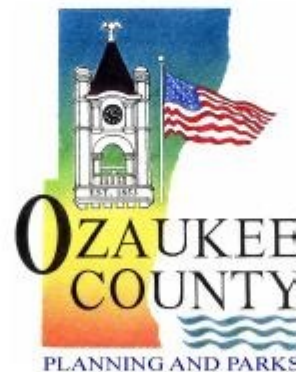
T 262.238.8257
F 262.238.8269

VIRMOND COUNTY PARK



**10606 LAKESHORE DRIVE
MEQUON, WI**

*Discover the natural beauty of
Ozaukee County...*



REV 2010.12.08 [LC]

[www.co.ozaukee.wi.us/
PlanningParks](http://www.co.ozaukee.wi.us/PlanningParks)

**OZAUKEE COUNTY
PARK SYSTEM**

DISCOVER VIRMOND PARK

WHY VISIT?

The Lake Michigan vista from the high clay bluffs are what make Virmond Park so unique. The bluffs tower over the Lake Michigan shoreline at a height of 90 to 110 feet and create amazing views out over Lake Michigan. Virmond Park is a great place to have a picnic or enjoy a game of tennis or volleyball while the kids play on the playground. The hiking and walking trails are also host to cross-country running meets.

Virmond Park also contains one of three Important Bird Areas (IBA) in Ozaukee County and is on the Lake Michigan Flyway. The County is actively maintaining native habitat for birds. Diving ducks, loons, grebes, migrant raptors, and passerines are attracted to Virmond Park's shoreline and woodland areas.

SHELTER RENTAL:

Virmond Park offers two open air shelters and picnic areas which are both available to rent. Both shelters offer banquet tables with seating for up to 100 visitors, electric outlets, an outdoor grill, a drinking water fountain, and flush toilets. Reservations for the shelters are required. Call the park caretaker for available dates: 262.241.5868

THE HISTORY:

In 1944, George Virmond donated beautiful lakeshore land with the request of developing a Park for all to enjoy. The 63-acre land was donated to Ozaukee County. Virmond Park is one of the oldest parks in the Ozaukee County Park System.

The County took on the task of developing the park with the requirement of having an on-site caretaker. The park has been managed to include a diverse array of recreational activities and wildlife habitat, so visitors of all ages can gather and share in the beauty of Virmond Park.



ACTIVITIES & AMENITIES:

- Baseball Diamond
- Birding/Wildlife Viewing
- Drinking Water
- Grills
- Nature Trails
- Picnicking
- Lake Michigan Water Trail
- Leashed Dogs
- Playground
- Restrooms
- Sand Volleyball
- Shelters
- Soccer Fields
- Tennis Courts
- X-Country Skiing

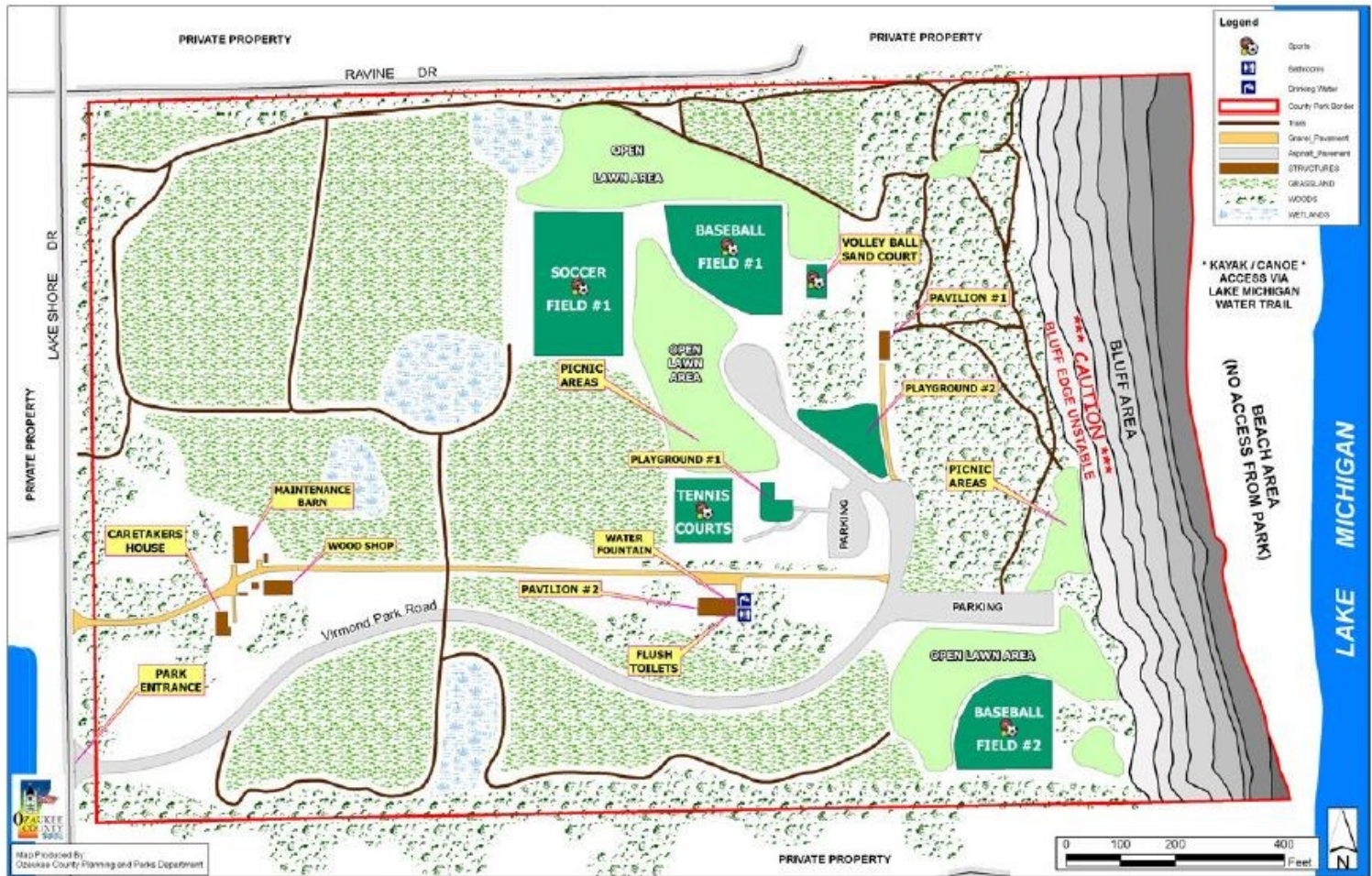
PARK SIZE: 62.5 acres

YEAR ACQUIRED: 1944

COST OF ACQUISITION: Donated

*Contact the Planning & Parks
Department to reserve a
shelter and/or area!*

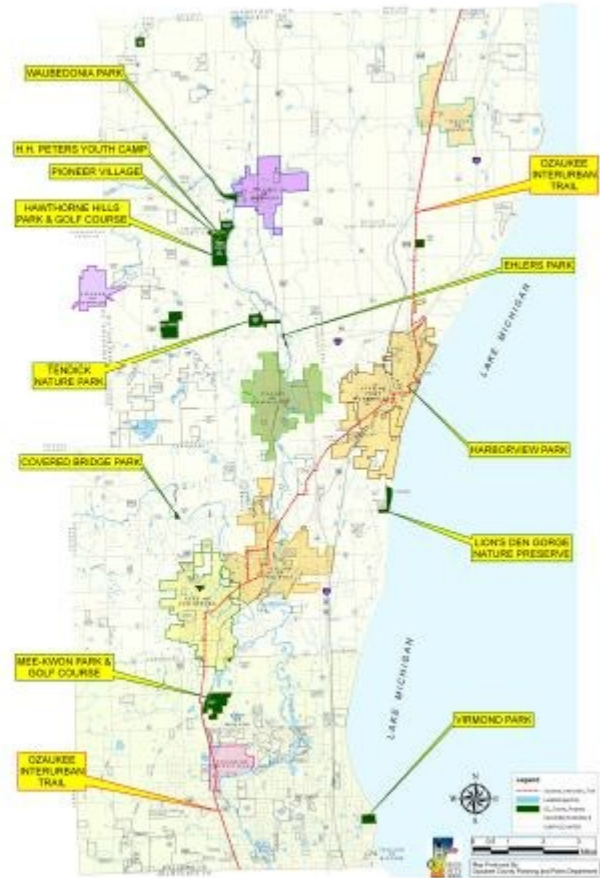
262.241.5868



VIRMOND COUNTY PARK MAP

OZAUKEE COUNTY PARKS GUIDE

	Madison Park & Golf Course 341-5868	Wood Park 343-1310	Claytonville Center 375-6851	Leonaud Ridge Park 493-2825	Leonaud Ridge Park 493-2825	East Oak Ridge Nature Preserve 493-2825	Switz Nature Park 238-0257	Northwood Hills Park & Golf Course 493-2825	Superior Park 338-0157	Madison Park 493-2151	Madison Park 493-2825
Phone (502)											
Baseball	●	●									●
Canoe / Kayak Access				●	●			●			●
Camping											●
Disc Golf								●			
Drinking Water	●	●	●	●	●			●		●	●
Fishing		●		●	●			●			●
Golf Course		●									●
Historic Feature(s)				●				●		●	●
Ice Skating / Rinks		●	●								
Lake Michigan Access							●				
Leashed Dogs	●	●		●	●			●		●	●
Lodger Rooms		●		●							●
Lodging											●
Nature Trails / Area	●	●		●	●			●		●	●
Picnic / Grills	●	●		●	●			●		●	●
Pro Shop				●							●
Restaurant		●									●
Restrooms / Toilets	●	●	●	●	●			●		●	●
Sand Volleyball	●							●			
Shelter	●										●
Skating		●									●
Snowmobile Trail Access				●	●						●
Snow	●										●
Swims	●										●
Wildlife Viewing	●	●		●	●			●		●	●
X-Country Skiing	●	●					●	●		●	●



OZAUKEE COUNTY PARKS MAP